

Mending a Faltering Heart

Mo Li, Juan Carlos Izpisua Belmonte

Abstract: More people die every year from ischemic heart disease than any other disease. Because the human heart lacks sufficient ability to replenish the damaged cardiac muscles, extensive research has been devoted toward understanding the homeostatic and regenerative potential of the heart and to develop regenerative therapies for heart disease. Here, we discuss recent advances in the understanding of mechanisms governing heart growth during homeostasis or injury, including those from observational studies in humans and experimental research in animal models of cardiac regeneration. We also discuss how progress in stem cell biology and cellular reprogramming has enabled exciting new strategies for cardiac regeneration. (*Circ Res.* 2016;118:344-351. DOI: 10.1161/CIRCRESAHA.115.306820.)

Key Words: cellular reprogramming ■ induced pluripotent stem cells ■ myocardial infarction ■ myocardial ischemia ■ myocytes, cardiac

According to statistics from the World Health Organization, ischemic heart disease is the number one cause of death in the world population. It amounted to 7.4 million deaths in 2012 and has since shown a depressing upward trend in the number of lives claimed per year (<http://www.who.int/mediacentre/factsheets/fs310/en/>). Ischemic heart disease is caused by narrowing of coronary heart arteries, which restricts blood supply to ventricular muscles. A severe ischemia event will result in acute myocardial infarction (MI), characterized by massive loss of cardiomyocytes. This lost myocardial tissue cannot be regenerated because of a lack of innate ability of the human heart to replenish large numbers of cardiomyocytes and is replaced by fibrotic scar tissues instead. As a result, the infarct region is electrically uncoupled from the rest of the myocardium, leading to the loss of contractile function, pathological remodeling of the ventricular walls, and eventually heart failure. Current therapies are designed to preserve remaining cardiomyocytes and to reduce the morbidity and mortality associated with the pathological aftermath of MI. However, they flunk the heart of the mission—regeneration of lost cardiomyocytes. Here, we focus the discussion on regeneration of cardiomyocytes and point the readers on other important cardiac cell types to excellent reviews.^{1,2}

Proliferation Potential of Cardiomyocytes

An adult human left ventricle has several billion cardiomyocytes.³ They often become binucleated,⁴ contain elaborated contractile arrays called sarcomeres, and form a biomechanically aligned and electrically connected contractile unity.⁵ These features of mature cardiomyocytes have spawned a long-held paradigm that the myocardium is a terminally differentiated postmitotic tissue and that postnatal cardiomyocytes lack

proliferation capacity and grow by hypertrophy. However, this view leads to peculiar conclusions, for example, that any cardiomyocyte loss after birth will cause cardiac muscle mass to shrink and that surviving cardiomyocytes have to perform billions of contractions throughout the lifespan of the individual. This paradigm has been conclusively overturned by recent evidence from monitoring the pulse labeling of human cardiomyocyte DNA by ¹⁴C generated in the Cold War era nuclear tests⁶ and from measuring DNA synthesis using multi-isotope imaging mass spectrometry in genetically labeled mouse cardiomyocytes.⁷ A key issue on the topic of cardiomyocyte turnover is to accurately differentiate cell division from cell cycle activity that may also lead to polyploidy and multinucleation. The mouse multi-isotope imaging mass spectrometry study combined non-radioactive stable isotope detection, fluorescence in situ hybridization, and imaging to resolve this issue. These studies show that mammalian cardiomyocytes renew at a low rate ($\approx 1\%$ annually) under homeostasis, and this rate increases by roughly 4-fold (based on multi-isotope imaging mass spectrometry and imaging evidence in mouse⁷) during injury but declines with age. It is worth noting that the annual renewal values obtained by these studies matched well with the extrapolated value from a classical study performed by Soonpaa and Field in 1997.⁸

Interestingly, a recent study reported a burst of proliferation during preadolescence mouse development (postnatal day 15) that increased cardiomyocyte numbers by $\approx 40\%$.⁹ This intense cardiomyocyte proliferation seemed to be driven by an upsurge of thyroid hormone, an endogenous transcriptional activator of postnatal growth, which in turn activated the IGF-1 (insulin-like growth factor 1)/IGF-1R (IGF-1 receptor)/AKT (also known as protein kinase B, or PKB) pathway. This

Original received October 6, 2015; revision received December 2, 2015; accepted December 7, 2015.

From the Gene Expression Laboratory, the Salk Institute for Biological Studies, La Jolla, CA (M.L., J.C.I.B.); and Universidad Católica San Antonio de Murcia (UCAM) Campus de los Jerónimos, Murcia, Spain (M.L.).

Correspondence to Juan Carlos Izpisua Belmonte, Gene Expression Laboratory, the Salk Institute for Biological Studies, 10010 N Torrey Pines Rd, La Jolla, CA 92037. E-mail belmonte@salk.edu

© 2016 American Heart Association, Inc.

Circulation Research is available at <http://circres.ahajournals.org>

DOI: 10.1161/CIRCRESAHA.115.306820

Nonstandard Abbreviations and Acronyms

CPC	cardiac progenitor cell
hESC	human embryonic stem cell
iPSC	induced pluripotent stem cell
MI	myocardial infarction

argues that the proliferation potential of postnatal mammalian cardiomyocyte may be greater than previously appreciated and, more importantly, it may be augmented by specific signals. If confirmed in humans, this phenomenon has important therapeutic implications.

Where do the newly born cardiomyocytes originate? During development, cardiomyocytes along with other major cardiac cell types, including conduction system cells, endothelial cells, smooth muscle cells, and cardiac fibroblasts, are derived from multipotent cardiac progenitor cells (CPCs) in the embryonic heart fields. The CPCs of the first heart field, marked by HCN4 (hyperpolarization-activated cyclic nucleotide-gated channel 4), contribute to cardiomyocytes of the left ventricle, areas of atria, and the conduction system in lineage-tracing studies.^{10,11} The CPCs of the second heart field, marked by the LIM/homeodomain transcription factor ISL1 also give rise to cardiomyocytes, conductive cells, and other cardiac cell types.^{12–14} The epicardium, a single layer of cells enclosing the heart, is also a source of CPC during embryogenesis. The epicardium-derived progenitor cells, marked by WT1 and TBX18, have been reported to make a substantial contribution to cardiomyocytes in the ventricular septum and the atrial and ventricular walls, as well as to smooth muscle cells and cardiac fibroblasts,^{15,16} although recent evidence indicates that more refined lineage-tracking schemes may be necessary to conclusively determine the epicardial origin of cardiomyocytes.¹⁷ Unlike the embryonic CPCs in the first and second heart fields, epicardium-derived progenitor cells are present in the adult heart. Therefore, strategies to activate these potential endogenous progenitors of cardiomyocytes could bring significant therapeutic benefits.

In the adult heart, multiple types of stem/progenitor-like cells have been reported to contribute to newly generated cardiomyocytes during homeostasis or injury repair. These can be broadly divided into the noncardiac resident type that includes bone marrow-derived cells and the cardiac resident type that includes c-Kit⁺ CPCs, Sca-1⁺ CPCs, side population cells, and epicardium-derived progenitor cells. The origin and lineage potential of these putative adult CPCs and the clinical trials and controversies associated with these cells have been discussed in detail by several excellent reviews.^{18–21} The prevailing view is that these adult CPCs do not contribute to the cardiomyocyte number at physiologically relevant levels during cardiac homeostasis, although their cardiomyogenic potential can be boosted under certain conditions,^{22,23} and that their cardioprotective properties observed in preclinical studies and clinical trials (reviewed in Ref 21) are due to paracrine effects.

In contrast to the controversy shrouding adult CPCs, there is compelling evidence supporting pre-existing cardiomyocytes as the predominant source of cardiomyocyte renewal under homeostasis. A study in mice tracked stable isotope (¹⁵N)

labeling of genetically labeled cardiomyocytes and showed that the birth of new cardiomyocytes occurs infrequently through division of pre-existing cardiomyocytes during normal aging, and the speed of cardiomyocyte renewal is accelerated by MI.⁷ Another study also concluded that the α -myosin heavy chain positive cardiomyocytes are the cells of origin in postnatal cardiomyogenesis by analyzing mosaic clones of cardiomyocytes generated by interchromosomal recombination.²⁴ However, the authors of the latter study did not observe any increase in cardiomyocyte proliferation after MI, contradicting previous findings. Whether this is because of differences in mouse models, injury types, or labeling efficiency remains an open question.

A recent study examined cardiomyocyte proliferation in heart tissues of young humans (age, 0–20) and adults (age, 21–59) using image-based assays. Cardiomyocyte mitosis was detectable throughout life, which is consistent with the ¹⁴C bomb-dating study. Cardiomyocyte division rate was the highest in infants and decreased to low levels by age 20. There was a surprising 3.4-fold increase in the cardiomyocyte number from age 1 to 20.²⁵ These findings suggest that young humans may be able to regenerate the myocardium. In contrast, cardiomyocyte cytokinesis was not detectable beyond age 20. Interestingly, there was no increase in binucleation but rather an increase of nuclear ploidy with age. The recalcitrance of adult cardiomyocytes to go through cytokinesis may have multiple causes, such as physical hindrance by sarcomeres,²⁶ lack of hormonal or neural signals controlling postnatal growth,^{5,27} and changes in epigenetic pathways.²⁸ As the body of evidence supporting cardiomyocytes as the most important cellular source of heart regeneration grows, it has become critically important to unlock the mechanisms that control mitosis and cytokinesis of adult cardiomyocytes and identify strategies to enhance cardiomyocyte regeneration.

Animal Models of Cardiac Regeneration

Animals that can naturally regenerate their heart after injury offer a window to peer into the process of cardiomyocyte regeneration. Lower animals, such as newts and zebrafish, can fully regenerate their heart after resection of $\approx 20\%$ apical myocardium.^{29–31} In the case of zebrafish, other injury models have been used to study the regeneration process. These include cryoinjury of $\approx 20\%$ of the ventricular wall^{32–34} and genetic ablation, in which $\leq 60\%$ of cardiomyocytes are killed by cardiomyocyte-specific expression of diphtheria toxin A driven by a cardiac myosin light chain 2 (*cmlc2*) promoter and tamoxifen-Cre.³⁵ Little scar formation was observed in the mechanical and genetic injury models. A fibrotic scar formed initially after cryoinjury but was gradually replaced with regenerated tissue, resulting in a more protracted yet still scarless recovery.³⁶ In contrast, the adult mammalian heart forms fibrotic scars after injury without regenerating the lost myocardium. Surprisingly, recent studies suggest that much like adult zebrafish, 1-day-old neonatal mouse can regenerate its heart after various injuries, including amputation,³⁷ ischemic MI,³⁸ and cryoinjury.^{39,40} Unlike the adult zebrafish heart whose regenerative capacity does not decrease with age,⁴¹ the regenerative ability of the neonatal murine heart is lost by postnatal day 7. Another important difference worth

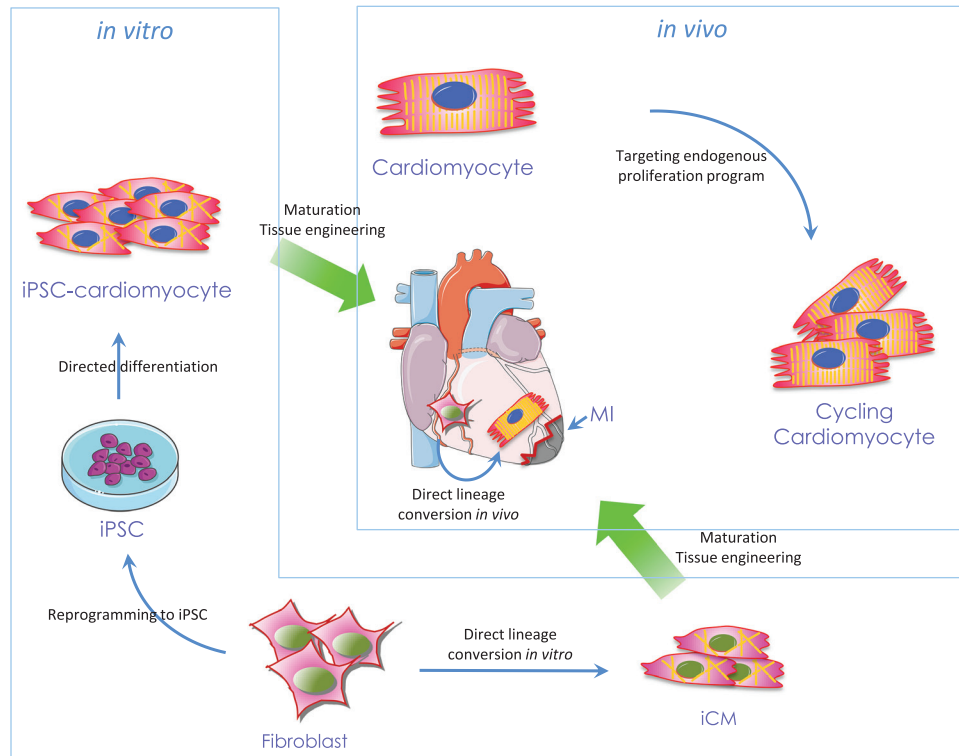


Figure. Recent strategies for cardiomyocyte regeneration. Cardiomyocytes can be induced to re-enter the cell cycle through modulation of endogenous cardiomyocyte proliferation programs. Reprogramming to induced pluripotent stem cell (iPSCs) followed by directed differentiation could provide a large number of immature cardiomyocytes. Other noncardiomyocyte cells, such as fibroblasts, can be directly converted to induced cardiomyocytes (iCMs). These *in vitro* derived cardiomyocytes may be further matured using tissue engineering technologies. *In situ* conversion of cardiac fibroblasts also represents a promising strategy for heart repair. MI indicates myocardial infarction.

noting is that the murine heart is still growing during the first few days of neonatal life and contains actively dividing cardiomyocytes, whereas the adult zebrafish heart has reached homeostasis and is largely postmitotic. Thus, it could be argued that the regenerative response mounted by the neonatal murine heart is a form of compensatory growth or at least benefits from the underlying developmental cardiomyocyte growth. Nonetheless, the transient neonatal cardiac regeneration in mice, together with the surprisingly large increase in the cardiomyocyte number during childhood and adolescence in humans, should fuel optimism in rejuvenating the regenerative potential of the adult human heart therapeutically.

In zebrafish, the regeneration process is initiated by reactivation of developmental programs in the epicardium, myocardium, and endocardium.⁴² Activation of epicardium and endocardium provides paracrine factors, including retinoic acid and CXCL12a, that are essential for cardiomyocyte proliferation and migration.^{43,44} Epicardial cells also contribute to neovascularization of the regenerating tissue through epithelial-to-mesenchymal transition, where the fibroblast growth factor signaling and platelet-derived growth factor signaling are important.^{45,46} Genetic fate-mapping experiments have conclusively shown that the cellular source of the regenerated myocardium is derived from pre-existing cardiomyocytes that have undergone dedifferentiation and subsequent proliferation.^{47,48} Dedifferentiated cardiomyocytes re-express the embryonic cardiogenesis gene *Gata4*, disassemble their sarcomeric structures, become detached from one another,

and upregulate the cell cycle regulators. The determination of the dedifferentiation process in fate-mapped pre-existing cardiomyocytes, as evidenced by sarcomere disassembly and gradual loss of mature cardiomyocyte morphology, argues against differentiated cardiac progenitors as the source of new cardiomyocytes. Once cell division is completed, regenerated cardiomyocytes undergo a maturation step and reintegrate into the myocardium, thereby restoring cardiac function.

The process of heart regeneration in neonatal murine is reminiscent of that in zebrafish.^{37,38,40} Lineage-tracing and histological studies confirmed that the regenerated cardiomyocytes come from pre-existing cardiomyocytes through cell division. In addition, Porrello et al³⁸ reported a robust angiogenic response as part of the regeneration process. There is evidence that *c-Kit*⁺ CPCs are induced to expand after injury and could contribute to both angiogenesis and cardiogenesis in the neonatal heart but not in the adult heart.³⁹

Why can't the adult mammalian heart regenerate itself? Many theories have been put forward to answer this. It has been postulated that cytokinesis is blocked in adult cardiomyocytes because of binucleation. Consistent with this idea, zebrafish cardiomyocytes are mostly mononuclear, which may help maintain their proliferative capacity during regeneration.⁴⁹ The adult mammalian heart contains binucleated cardiomyocytes, although the degree of binucleation varies among species.⁵⁰ For example, most adult murine cardiomyocytes are binucleated, whereas binucleation of human cardiomyocyte remains at a constant low level throughout life.²⁵ It has been shown

that in vivo proliferating cardiomyocytes reside primarily in the mononucleated fraction.^{25,51} Recent observation during the burst of cardiomyocyte proliferation in a preadolescence mouse suggests the possibility of cytokinesis in the binucleated population.⁹ The process of binucleation itself is under tight control by regulators of cell cycle and cytokinesis, as reviewed.⁵² Future quantitative analyses are required to clarify the relationship between the nuclearity, cell cycle status, and cell division of cardiomyocyte. To this end, a recently reported transgenic system composed of an α -myosin heavy chain positive:H2B-mCherry transgene and a CAG (a strong synthetic promoter)–eGFP (enhanced green fluorescent protein)–anillin transgene could be useful for unequivocal identification of cardiomyocyte nuclei and analysis of its cell cycle.⁵³

Compared with zebrafish hearts, mammalian hearts are of a more complex design in structure (4-chambered versus 2-chambered), tissue organization (fibroblasts account for most of the mammalian heart mass but are rare in the fish heart), mechanical properties (higher blood pressure in mammals), and electric properties to handle the higher metabolic demand of mammals. One may speculate that in such complex hearts, the large-scale dedifferentiation and electric decoupling of cardiomyocytes as seen during zebrafish heart regeneration may not be compatible with organismal survival (because of lethal arrhythmia or reduced ability to evade predation). Notwithstanding the uncertainty about the proximate causes of this lack of regenerative ability, the ultimate cause may be that evolution has favored the solution of maintaining cardiac health through diet and physical activity over that of the costly regeneration. However, one should not be dissuaded from going back in evolution to borrow strategies to enhance human heart regeneration.

Factors that regulate the evolutionarily conserved regenerative program have been under intensive investigation. Cardiomyocyte renewal can be promoted by inhibiting negative regulators of proliferation, such as the Hippo signaling pathway⁵⁴ and the p38 mitogen-activated protein kinase pathway,⁵⁵ or activating the endogenous cardiomyocyte proliferation program through neuregulin 1 signaling,⁵¹ hypoxia and cell cycle regulators polo-like kinase 1 (*plk1*), and mitotic checkpoint kinase *mps1*.^{30,56}

Micro-RNAs (miRNAs) can also coordinately regulate cardiomyogenic programs. They have been shown to be attractive therapeutic targets for heart disease.⁵⁷ A screen of miRNAs identified miR-590 and miR-199a as positive regulators of cardiomyocyte proliferation,⁵⁸ whereas miR-133 and miR15 were found to inhibit cardiomyocyte proliferation.^{38,59} Interestingly, a pluripotency-associated miRNA cluster—miR302-367—has been shown to promote cardiomyocyte proliferation, reduce scar formation, and improve cardiac function.⁶⁰ Expression of miR302-367 reactivated cell cycle through repression of the Hippo signaling pathway. The pro-myogenic effect may also due to the induction of dedifferentiation by miR302-367, which is consistent with its role in somatic cell reprogramming.⁶¹ Our group recently identified miR-99/100 and Let-7a/c as critical regulators of zebrafish heart regeneration by systematic screening of genes differentially regulated during the process.²⁸ These miRs are highly

expressed in the uninjured heart but undergo rapid downregulation during injury. We further identified *fnb* (β -subunit of farnesyl transferase) and *Smarca5* (SWI/SNF-related matrix-associated actin-dependent regulator of chromatin subfamily a, member 5) as downstream targets of miR-99/100 and as important regulators of cardiomyocyte dedifferentiation. The same miR regulatory program was also found in adult mammalian cardiomyocytes, but it failed to be activated during injury. Experimental downregulation of miR99-100 promoted a dedifferentiated phenotype in adult murine and human cardiomyocytes, best exemplified by re-expression of GATA4 and proliferation markers and disassembly of sarcomeres. More importantly, in vivo delivery of antimirRs of miR-99/100 and Let-7a/c resulted in cardiomyocyte dedifferentiation and improved heart functionality in adult murine models of MI.

In addition to cardiac cells, nerves have been shown to be required for cardiomyocyte regeneration of both zebrafish and neonatal mice. This was demonstrated by a genetic model of hypoinnervation of the heart, pharmacological inhibition of cholinergic nerve activity, and mechanical denervation.²⁷ Administration of neuregulin 1 and nerve growth factor as recombinant proteins rescued the impaired regeneration caused by denervation. However, the connection between these factors and the nerve effect was not established. As several recent studies have demonstrated the role of neuregulin 1 and its co-receptor ERBB2 in cardiomyocyte dedifferentiation and proliferation,^{62–64} it will be of great interest to understand if these factors also act separately through the nervous system. One report has challenged the role of neuregulin 1 in activation of adult cardiomyocyte DNA synthesis, suggesting that the effect may be limited to a developmental window.⁶⁴ Interestingly, the denervated heart showed a reduced expression of inflammatory and immune pathway genes after injury. The prevailing view is that the immune system and inflammatory response play both positive and negative roles in tissue repair and regeneration. Acute inflammation has been shown to be required for proper regenerative response.^{65,66} Recent evidence further shows that macrophages are required for neonatal heart regeneration.^{67,68} These studies identified a population of embryonic-derived resident cardiac macrophages that minimized inflammation and promoted cardiomyocyte proliferation and angiogenesis in the regenerating neonatal heart. In the injured adult heart, however, these cells were replaced with monocyte-derived macrophages that were proinflammatory and lacked regenerative ability.⁶⁷ Understanding the soluble factors and cell-mediated effects provided by various cellular components of the regenerating heart requires further studies.

Cardiac Regeneration by Cellular Reprogramming

Recent advances in stem cell biology have not only enabled de novo generation of cardiomyocytes in vitro but also brought forth exciting possibilities of reprogramming noncardiomyocytes into cardiomyocytes in vivo.

In 2006, Takahashi and Yamanaka⁶⁹ discovered induced pluripotent stem cells (iPSCs), thereby opening the floodgates for generating all kinds of immunocompatible cell types for cellular therapy. In vitro differentiation of iPSCs derived from patient fibroblasts can produce individually tailored

cardiomyocytes and other cardiac cell types for disease modeling, drug screen, and cell therapy. Multiple approaches have been devised to differentiate human embryonic stem cells (hESCs) and human iPSCs to cardiomyocytes.²¹ The efforts have been focused on increasing the efficiency (and thus yield) of cardiomyocyte differentiation and on specifically driving them toward the ventricular subtype. Protocol refinement requires detailed knowledge of *in vivo* cardiogenesis. For example, the identification of first heart field and second heart field markers facilitates the isolation of distinctively fated CPCs from differentiated iPSCs¹⁰ and enables specific commitment to ventricular cardiomyocytes⁷⁰ and conductive cells.¹¹ Fine-tuning key signaling pathways that orchestrate embryonic heart development (including activin/nodal, Wnt, fibroblast growth factor, Notch, and Sonic hedgehog) during differentiation have improved the yield of cardiomyocytes. A recent study achieved robust cardiomyocyte differentiation ($\leq 98\%$ pure) of hESCs and human iPSCs via differential modulation of Wnt signaling during early and late phases of differentiation,⁷¹ which mirrored the biphasic requirement of Wnt signaling in embryonic heart development.⁷² Regulated *MYC* expression can expand multipotent CPCs isolated in hiPSC/hESC differentiation cultures, thereby providing a large number of pure progenitors that can be patterned with morphogens to differentiate into pacemaker-like or ventricular-like cardiomyocytes.⁷³ Despite the improvements in yield and purity of hESC/hiPSC-derived cardiomyocytes, the field still faces a major roadblock: the immaturity of the differentiated cells. Tissue engineering techniques, such as biodegradable scaffolds⁷⁴ and 3-dimensional (3D) constructs consisting of other supporting cells,^{75,76} have shown early promise in improving electromechanical properties and engraftment.

The first clinical-scale transplantation of hESC-derived cardiomyocytes in a nonhuman primate model was published in 2014.⁷⁷ Up to 10^9 differentiated cardiomyocytes were delivered intramyocardially to the infarcted heart. The grafts remuscularized the damaged heart, received blood perfusion from host vasculature, and integrated electromechanically to host myocardium. However, the transplanted cells failed to mature completely, and nonfatal ventricular arrhythmias were observed in recipient hearts. Although this study did not provide clear evidence that transplantation of hESC-derived cardiomyocytes improves cardiac function after MI, it sets an important optimistic baseline for future investigation. It also highlights key problems, including the logistics of producing enough cardiomyocytes in an economically feasible manner, that need to be addressed before *in vitro* derived cardiomyocytes can be tested in humans.

The idea of iPSC reprogramming also reinvigorated an old concept of direct lineage conversion first described with the transcription factor MyoD a quarter of a century ago.^{78–80} Lineage conversion technologies entail converting one somatic cell type to another without reverting back to pluripotency.^{81,82} Lineage conversion has the obvious advantage of avoiding the risk of teratoma in the heart that may originate from the chance carryover of pluripotent cells.⁸³ It may also offer a shorter timeframe from biopsy to transplantable cells compared with iPSC generation followed by directed differentiation. Ieda et

al⁸⁴ first reported that 3 cardiac-specific transcription factors, *Gata4*, *Mef2c*, and *Tbx5* (collectively referred to as GMT), were sufficient to induce a cardiomyocyte-like phenotype from mouse postnatal cardiac or dermal fibroblasts.⁸⁴ The conversion process did not go through a progenitor-like state, indicating direct conversion. GMT-transduced fibroblasts also differentiated into cardiomyocyte-like cells after transplantation into the mouse heart. The induced cardiomyocytes, however, showed a low rate of maturation. A later study reported greatly varied conversion efficiency with the GMT method and stressed the importance of alternative cardiac reporters.⁸⁵ Because of differences in experimental design, further research is needed to settle the controversy. Subsequent studies identified new transcription factors,^{86,87} cardiac-enriched miRNAs,⁸⁸ and alternative delivery methods⁸⁹ that improved on the original GMT method. Cardiac conversion of human fibroblasts requires additional factors beyond GMT, and the human induced cardiomyocytes generated so far are functionally immature.^{90–93} Details of these studies have been recently reviewed.^{21,94}

The adult heart contains a large pool of fibroblasts, which could be a good target for direct lineage conversion. When retroviral vectors expressing GMT or GMT plus *Hand2*—another cardiac transcription factor—were introduced to mouse MI models, the resident cardiac fibroblasts were reprogrammed into cardiomyocyte-like cells at efficiencies not much different from those observed *in vitro*,^{86,95} although a much lower efficiency was reported by 1 group.⁸⁹ Interestingly, the *in vivo* conversion of induced cardiomyocytes seemed more complete and resulted in a more mature cardiomyocyte phenotype than *in vitro* induced cardiomyocytes. More importantly, *in vivo* cardiomyocyte conversion improved cardiac function after MI despite being an inefficient process. These encouraging results indicate that *in vivo* lineage conversion is a promising strategy for restoring heart function.

Future Prospectives

Intensive research in recent years has led to surprise findings about the homeostatic and regenerative renewal capacity of the heart. They have in turn spurred the development of a multitude of strategies to regenerate the damaged heart (Figure). Many unresolved issues stand between current strategies and future clinical therapies. It is unclear what cell type(s) will be most suitable for transplantation therapy, which is largely because of a lack of understanding of the mechanism of action of the transplanted cells. Long-term engraftment of transplanted cardiomyocytes has not been feasible, probably because of their inability to integrate mechanically and electrically. Combining stem cell technology with bioengineering methods, such as 3D artificial cardiac constructs comprising cardiomyocytes, endothelial cells and fibroblasts, has shown promise in addressing this issue.^{96–98} A recent article from the Ruiz-Lozano group showed that reconstitution of follistatin-like 1, a regenerative factor secreted by the healthy epicardium, using a bioengineered epicardial patch improved cardiac function in mouse and swine models of MI.⁹⁹ As for these cell-free approaches, the safety of the factors—be it recombinant proteins for promoting cardiomyocyte growth, miRNAs for

promoting dedifferentiation, or viral vectors for cellular reprogramming—has to be carefully monitored in vivo. To obtain preclinical data relevant to human physiology, large animal models would have to be used.

Besides tackling these issues, researchers should also be on the lookout for other potentially disruptive technologies that are on the horizon. For example, by combining targeted genome-editing technologies¹⁰⁰ and blastocyst complementation,¹⁰¹ it may be possible to generate chimeric animals from which human heart tissues or even whole organs may be harvested. Such technologies are undoubtedly fraught with ethical issues. However, technological advancement could make it possible to find ethically acceptable animal models or developmental stages from which proliferating human cardiomyocytes can be isolated for therapy. In the future, mechanistic studies of the process of heart regeneration combined with new technological developments in the areas of stem cells, bioengineering, and genome editing will be major drivers that continue to spin the flywheel that powers the field of cardiac regeneration forward.

Sources of Funding

M. Li was supported by a CIRM (California Institute for Regenerative Medicine) Training Grant Fellowship. Work in the laboratory of J.C. Izpisa Belmonte was supported by Universidad Católica San Antonio de Murcia, the G. Harold and Leila Y. Mathers Charitable Foundation, and The Leona M. and Harry B. Helmsley Charitable Trust (2012-PG-MED002).

Disclosures

None.

References

- Baudino TA, Carver W, Giles W, Borg TK. Cardiac fibroblasts: friend or foe? *Am J Physiol Heart Circ Physiol*. 2006;291:H1015–H1026. doi: 10.1152/ajpheart.00023.2006.
- Yuan P, Ma X. Endothelial cells facilitate cell-based cardiac repair: progress and challenge. *Curr Stem Cell Res Ther*. 2014;9:415–423.
- Beltrami AP, Urbaneck K, Kajstura J, Yan SM, Finato N, Bussani R, Nadal-Ginard B, Silvestri F, Leri A, Beltrami CA, Anversa P. Evidence that human cardiac myocytes divide after myocardial infarction. *N Engl J Med*. 2001;344:1750–1757. doi: 10.1056/NEJM200106073442303.
- Olivetti G, Cigola E, Maestri R, Corradi D, Lagrasta C, Gambert SR, Anversa P. Aging, cardiac hypertrophy and ischemic cardiomyopathy do not affect the proportion of mononucleated and multinucleated myocytes in the human heart. *J Mol Cell Cardiol*. 1996;28:1463–1477. doi: 10.1006/jmcc.1996.0137.
- Maillet M, van Berlo JH, Molkentin JD. Molecular basis of physiological heart growth: fundamental concepts and new players. *Nat Rev Mol Cell Biol*. 2013;14:38–48. doi: 10.1038/nrm3495.
- Bergmann O, Bhardwaj RD, Bernard S, Zdunek S, Barnabé-Heider F, Walsh S, Zupicich J, Alkass K, Buchholz BA, Druid H, Jovinge S, Frisén J. Evidence for cardiomyocyte renewal in humans. *Science*. 2009;324:98–102. doi: 10.1126/science.1164680.
- Senyo SE, Steinhauser ML, Pizzimenti CL, Yang VK, Cai L, Wang M, Wu TD, Guerin-Kern JL, Lechene CP, Lee RT. Mammalian heart renewal by pre-existing cardiomyocytes. *Nature*. 2013;493:433–436. doi: 10.1038/nature11682.
- Soonpaa MH, Field LJ. Assessment of cardiomyocyte DNA synthesis in normal and injured adult mouse hearts. *Am J Physiol*. 1997;272:H220–H226.
- Naqvi N, Li M, Calvert JW, et al. A proliferative burst during preadulthood establishes the final cardiomyocyte number. *Cell*. 2014;157:795–807. doi: 10.1016/j.cell.2014.03.035.
- Später D, Abramczuk MK, Buac K, Zangi L, Stachel MW, Clarke J, Sahara M, Ludwig A, Chien KR. A HCN4+ cardiomyogenic progenitor derived from the first heart field and human pluripotent stem cells. *Nat Cell Biol*. 2013;15:1098–1106. doi: 10.1038/ncb2824.
- Liang X, Wang G, Lin L, Lowe J, Zhang Q, Bu L, Chen Y, Chen J, Sun Y, Evans SM. HCN4 dynamically marks the first heart field and conduction system precursors. *Circ Res*. 2013;113:399–407. doi: 10.1161/CIRCRESAHA.113.301588.
- Moretti A, Caron L, Nakano A, Lam JT, Bernshausen A, Chen Y, Qyang Y, Bu L, Sasaki M, Martin-Puig S, Sun Y, Evans SM, Laugwitz KL, Chien KR. Multipotent embryonic Isl1+ progenitor cells lead to cardiac, smooth muscle, and endothelial cell diversification. *Cell*. 2006;127:1151–1165. doi: 10.1016/j.cell.2006.10.029.
- Sun Y, Liang X, Najafi N, Cass M, Lin L, Cai CL, Chen J, Evans SM. Islet 1 is expressed in distinct cardiovascular lineages, including pacemaker and coronary vascular cells. *Dev Biol*. 2007;304:286–296. doi: 10.1016/j.ydbio.2006.12.048.
- Bu L, Jiang X, Martin-Puig S, Caron L, Zhu S, Shao Y, Roberts DJ, Huang PL, Domian IJ, Chien KR. Human ISL1 heart progenitors generate diverse multipotent cardiovascular cell lineages. *Nature*. 2009;460:113–117. doi: 10.1038/nature08191.
- Zhou B, Ma Q, Rajagopal S, Wu SM, Domian I, Rivera-Feliciano J, Jiang D, von Gise A, Ikeda S, Chien KR, Pu WT. Epicardial progenitors contribute to the cardiomyocyte lineage in the developing heart. *Nature*. 2008;454:109–113. doi: 10.1038/nature07060.
- Cai CL, Martin JC, Sun Y, Cui L, Wang L, Ouyang K, Yang L, Bu L, Liang X, Zhang X, Stallcup WB, Denton CP, McCulloch A, Chen J, Evans SM. A myocardial lineage derives from Tbx18 epicardial cells. *Nature*. 2008;454:104–108. doi: 10.1038/nature06969.
- Christoffels VM, Grieskamp T, Norden J, Mommersteeg MT, Rudat C, Kispert A. Tbx18 and the fate of epicardial progenitors. *Nature*. 2009;458:E8–E9. doi: 10.1038/nature07916.
- van Berlo JH, Molkentin JD. An emerging consensus on cardiac regeneration. *Nat Med*. 2014;20:1386–1393. doi: 10.1038/nm.3764.
- Keith MC, Bolli R. “String theory” of c-kit(pos) cardiac cells: a new paradigm regarding the nature of these cells that may reconcile apparently discrepant results. *Circ Res*. 2015;116:1216–1230. doi: 10.1161/CIRCRESAHA.116.305557.
- Chong JJ, Forte E, Harvey RP. Developmental origins and lineage descendants of endogenous adult cardiac progenitor cells. *Stem Cell Res*. 2014;13:592–614. doi: 10.1016/j.scr.2014.09.008.
- Sahara M, Santoro F, Chien KR. Programming and reprogramming a human heart cell. *EMBO J*. 2015;34:710–738. doi: 10.15252/emj.201490563.
- Smart N, Bollini S, Dubé KN, Vieira JM, Zhou B, Davidson S, Yellon D, Riegler J, Price AN, Lythgoe MF, Pu WT, Riley PR. De novo cardiomyocytes from within the activated adult heart after injury. *Nature*. 2011;474:640–644. doi: 10.1038/nature10188.
- Zhou B, Honor LB, Ma Q, Oh JH, Lin RZ, Melero-Martin JM, von Gise A, Zhou P, Hu T, He L, Wu KH, Zhang H, Zhang Y, Pu WT. Thymosin beta 4 treatment after myocardial infarction does not reprogram epicardial cells into cardiomyocytes. *J Mol Cell Cardiol*. 2012;52:43–47. doi: 10.1016/j.jmcc.2011.08.020.
- Ali SR, Hippenmeyer S, Saadat LV, Luo L, Weissman IL, Ardehali R. Existing cardiomyocytes generate cardiomyocytes at a low rate after birth in mice. *Proc Natl Acad Sci U S A*. 2014;111:8850–8855. doi: 10.1073/pnas.1408233111.
- Mollova M, Bersell K, Walsh S, Savla J, Das LT, Park SY, Silberstein LE, Dos Remedios CG, Graham D, Colan S, Kühn B. Cardiomyocyte proliferation contributes to heart growth in young humans. *Proc Natl Acad Sci U S A*. 2013;110:1446–1451. doi: 10.1073/pnas.1214608110.
- Engel FB, Schebesta M, Keating MT. Anillin localization defect in cardiomyocyte binucleation. *J Mol Cell Cardiol*. 2006;41:601–612. doi: 10.1016/j.jmcc.2006.06.012.
- Mahmoud AI, O’Meara CC, Gemberling M, Zhao L, Bryant DM, Zheng R, Gannon JB, Cai L, Choi WY, Egnaczyk GF, Burns CE, Burns CG, MacRae CA, Poss KD, Lee RT. Nerves regulate cardiomyocyte proliferation and heart regeneration. *Dev Cell*. 2015;34:387–399. doi: 10.1016/j.devcel.2015.06.017.
- Aguirre A, Montserrat N, Zacchigna S, et al. In vivo activation of a conserved microRNA program induces mammalian heart regeneration. *Cell Stem Cell*. 2014;15:589–604. doi: 10.1016/j.stem.2014.10.003.
- Witman N, Murtuza B, Davis B, Arner A, Morrison JI. Recapitulation of developmental cardiogenesis governs the morphological and functional regeneration of adult newt hearts following injury. *Dev Biol*. 2011;354:67–76. doi: 10.1016/j.ydbio.2011.03.021.
- Poss KD, Wilson LG, Keating MT. Heart regeneration in zebrafish. *Science*. 2002;298:2188–2190. doi: 10.1126/science.1077857.

31. Raya A, Koth CM, Büscher D, Kawakami Y, Itoh T, Raya RM, Sternik G, Tsai HJ, Rodríguez-Esteban C, Izpisua-Belmonte JC. Activation of Notch signaling pathway precedes heart regeneration in zebrafish. *Proc Natl Acad Sci U S A*. 2003;100(suppl 1):11889–11895. doi: 10.1073/pnas.1834204100.
32. González-Rosa JM, Martín V, Peralta M, Torres M, Mercader N. Extensive scar formation and regression during heart regeneration after cryoinjury in zebrafish. *Development*. 2011;138:1663–1674. doi: 10.1242/dev.060897.
33. Schnabel K, Wu CC, Kurth T, Weidinger G. Regeneration of cryoinjury induced necrotic heart lesions in zebrafish is associated with epicardial activation and cardiomyocyte proliferation. *PLoS One*. 2011;6:e18503. doi: 10.1371/journal.pone.0018503.
34. Chablais F, Veit J, Rainer G, Jaźwińska A. The zebrafish heart regenerates after cryoinjury-induced myocardial infarction. *BMC Dev Biol*. 2011;11:21. doi: 10.1186/1471-213X-11-21.
35. Wang J, Panáková D, Kikuchi K, Holdway JE, Gemberling M, Burriss JS, Singh SP, Dickson AL, Lin YF, Sabeh MK, Werdich AA, Yelon D, Macrae CA, Poss KD. The regenerative capacity of zebrafish reverses cardiac failure caused by genetic cardiomyocyte depletion. *Development*. 2011;138:3421–3430. doi: 10.1242/dev.068601.
36. González-Rosa JM, Guzmán-Martínez G, Marques IJ, Sánchez-Iranzo H, Jiménez-Borreguero LJ, Mercader N. Use of echocardiography reveals reestablishment of ventricular pumping efficiency and partial ventricular wall motion recovery upon ventricular cryoinjury in the zebrafish. *PLoS One*. 2014;9:e115604. doi: 10.1371/journal.pone.0115604.
37. Porrello ER, Mahmoud AI, Simpson E, Hill JA, Richardson JA, Olson EN, Sadek HA. Transient regenerative potential of the neonatal mouse heart. *Science*. 2011;331:1078–1080. doi: 10.1126/science.1200708.
38. Porrello ER, Mahmoud AI, Simpson E, Johnson BA, Grinsfelder D, Canseco D, Mammen PP, Rothermel BA, Olson EN, Sadek HA. Regulation of neonatal and adult mammalian heart regeneration by the miR-15 family. *Proc Natl Acad Sci U S A*. 2013;110:187–192. doi: 10.1073/pnas.1208863110.
39. Jesty SA, Steffey MA, Lee FK, Breitbach M, Hesse M, Reining S, Lee JC, Doran RM, Nikitin AY, Fleischmann BK, Kotlikoff MI. c-kit+ precursors support postinfarction myogenesis in the neonatal, but not adult, heart. *Proc Natl Acad Sci U S A*. 2012;109:13380–13385. doi: 10.1073/pnas.1208114109.
40. Strungs EG, Ongstad EL, O'Quinn MP, Palatinus JA, Jourdan LJ, Gourdie RG. Cryoinjury models of the adult and neonatal mouse heart for studies of scarring and regeneration. *Methods Mol Biol*. 2013;1037:343–353. doi: 10.1007/978-1-62703-505-7_20.
41. Itou J, Kawakami H, Burgoyne T, Kawakami Y. Life-long preservation of the regenerative capacity in the fin and heart in zebrafish. *Biol Open*. 2012;1:739–746. doi: 10.1242/bio.20121057.
42. Kikuchi K, Poss KD. Cardiac regenerative capacity and mechanisms. *Annu Rev Cell Dev Biol*. 2012;28:719–741. doi: 10.1146/annurev-cellbio-101011-155739.
43. Kikuchi K, Holdway JE, Major RJ, Blum N, Dahn RD, Begemann G, Poss KD. Retinoic acid production by endocardium and epicardium is an injury response essential for zebrafish heart regeneration. *Dev Cell*. 2011;20:397–404. doi: 10.1016/j.devcel.2011.01.010.
44. Itou J, Oishi I, Kawakami H, Glass TJ, Richter J, Johnson A, Lund TC, Kawakami Y. Migration of cardiomyocytes is essential for heart regeneration in zebrafish. *Development*. 2012;139:4133–4142. doi: 10.1242/dev.079756.
45. Lepilina A, Coon AN, Kikuchi K, Holdway JE, Roberts RW, Burns CG, Poss KD. A dynamic epicardial injury response supports progenitor cell activity during zebrafish heart regeneration. *Cell*. 2006;127:607–619. doi: 10.1016/j.cell.2006.08.052.
46. Kim J, Wu Q, Zhang Y, Wiens KM, Huang Y, Rubin N, Shimada H, Handin RI, Chao MY, Tuan TL, Starnes VA, Lien CL. PDGF signaling is required for epicardial function and blood vessel formation in regenerating zebrafish hearts. *Proc Natl Acad Sci U S A*. 2010;107:17206–17210. doi: 10.1073/pnas.0915016107.
47. Jopling C, Sleep E, Raya M, Martí M, Raya A, Izpisua Belmonte JC. Zebrafish heart regeneration occurs by cardiomyocyte dedifferentiation and proliferation. *Nature*. 2010;464:606–609. doi: 10.1038/nature08899.
48. Kikuchi K, Holdway JE, Werdich AA, Anderson RM, Fang Y, Egnaczyk GF, Evans T, Macrae CA, Stainier DY, Poss KD. Primary contribution to zebrafish heart regeneration by gata4(+) cardiomyocytes. *Nature*. 2010;464:601–605. doi: 10.1038/nature08804.
49. Wills AA, Holdway JE, Major RJ, Poss KD. Regulated addition of new myocardial and epicardial cells fosters homeostatic cardiac growth and maintenance in adult zebrafish. *Development*. 2008;135:183–192. doi: 10.1242/dev.010363.
50. Botting KJ, Wang KC, Padhee M, McMillen IC, Summers-Pearce B, Rattanaray L, Cutri N, Posterino GS, Brooks DA, Morrison JL. Early origins of heart disease: low birth weight and determinants of cardiomyocyte endowment. *Clin Exp Pharmacol Physiol*. 2012;39:814–823. doi: 10.1111/j.1440-1681.2011.05649.x.
51. Bersell K, Arab S, Haring B, Kühn B. Neuregulin1/ErbB4 signaling induces cardiomyocyte proliferation and repair of heart injury. *Cell*. 2009;138:257–270. doi: 10.1016/j.cell.2009.04.060.
52. Paradis AN, Gay MS, Zhang L. Binucleation of cardiomyocytes: the transition from a proliferative to a terminally differentiated state. *Drug Discov Today*. 2014;19:602–609. doi: 10.1016/j.drudis.2013.10.019.
53. Raulf A, Horder H, Tarnawski L, Geisen C, Ottersbach A, Röhl W, Jovinge S, Fleischmann BK, Hesse M. Transgenic systems for unequivocal identification of cardiac myocyte nuclei and analysis of cardiomyocyte cell cycle status. *Basic Res Cardiol*. 2015;110:33. doi: 10.1007/s00395-015-0489-2.
54. Heallen T, Morikawa Y, Leach J, Tao G, Willerson JT, Johnson RL, Martin JF. Hippo signaling impedes adult heart regeneration. *Development*. 2013;140:4683–4690. doi: 10.1242/dev.102798.
55. Jopling C, Suñe G, Morera C, Izpisua Belmonte JC. p38 α MAPK regulates myocardial regeneration in zebrafish. *Cell Cycle*. 2012;11:1195–1201. doi: 10.4161/cc.11.6.19637.
56. Jopling C, Suñe G, Faucherre A, Fabregat C, Izpisua Belmonte JC. Hypoxia induces myocardial regeneration in zebrafish. *Circulation*. 2012;126:3017–3027. doi: 10.1161/CIRCULATIONAHA.112.107888.
57. Olson EN. MicroRNAs as therapeutic targets and biomarkers of cardiovascular disease. *Sci Transl Med*. 2014;6:239ps3. doi: 10.1126/scitranslmed.3009008.
58. Eulalio A, Mano M, Dal Ferro M, Zentilin L, Sinagra G, Zacchigna S, Giacca M. Functional screening identifies miRNAs inducing cardiac regeneration. *Nature*. 2012;492:376–381. doi: 10.1038/nature11739.
59. Yin VP, Lepilina A, Smith A, Poss KD. Regulation of zebrafish heart regeneration by miR-133. *Dev Biol*. 2012;365:319–327. doi: 10.1016/j.ydbio.2012.02.018.
60. Tian Y, Liu Y, Wang T, et al. A microRNA-hippo pathway that promotes cardiomyocyte proliferation and cardiac regeneration in mice. *Sci Transl Med*. 2015;7:279ra238.
61. Anokye-Danso F, Trivedi CM, Juhr D, Gupta M, Cui Z, Tian Y, Zhang Y, Yang W, Gruber PJ, Epstein JA, Morrissy EE. Highly efficient miRNA-mediated reprogramming of mouse and human somatic cells to pluripotency. *Cell Stem Cell*. 2011;8:376–388. doi: 10.1016/j.stem.2011.03.001.
62. Gemberling M, Karra R, Dickson AL, Poss KD. Nrg1 is an injury-induced cardiomyocyte mitogen for the endogenous heart regeneration program in zebrafish. *Elife*. 2015;4. doi: 10.7554/eLife.05871.
63. D'Uva G, Aharonov A, Lauriola M, et al. ERBB2 triggers mammalian heart regeneration by promoting cardiomyocyte dedifferentiation and proliferation. *Nat Cell Biol*. 2015;17:627–638. doi: 10.1038/ncb3149.
64. Polizzotti BD, Ganapathy B, Walsh S, Choudhury S, Ammanamanchi N, Bennett DG, dos Remedios CG, Haubner BJ, Penninger JM, Kühn B. Neuregulin stimulation of cardiomyocyte regeneration in mice and human myocardium reveals a therapeutic window. *Sci Transl Med*. 2015;7:281ra45. doi: 10.1126/scitranslmed.aaa5171.
65. Kyritsis N, Kizil C, Zocher S, Kroehne V, Kaslin J, Freudenreich D, Iltzsche A, Brand M. Acute inflammation initiates the regenerative response in the adult zebrafish brain. *Science*. 2012;338:1353–1356. doi: 10.1126/science.1228773.
66. Godwin JW, Pinto AR, Rosenthal NA. Macrophages are required for adult salamander limb regeneration. *Proc Natl Acad Sci U S A*. 2013;110:9415–9420. doi: 10.1073/pnas.1300290110.
67. Lavine KJ, Epelman S, Uchida K, Weber KJ, Nichols CG, Schilling JD, Ornitz DM, Randolph GJ, Mann DL. Distinct macrophage lineages contribute to disparate patterns of cardiac recovery and remodeling in the neonatal and adult heart. *Proc Natl Acad Sci U S A*. 2014;111:16029–16034. doi: 10.1073/pnas.1406508111.
68. Aurora AB, Porrello ER, Tan W, Mahmoud AI, Hill JA, Bassel-Duby R, Sadek HA, Olson EN. Macrophages are required for neonatal heart regeneration. *J Clin Invest*. 2014;124:1382–1392. doi: 10.1172/JCI72181.
69. Takahashi K, Yamanaka S. Induction of pluripotent stem cells from mouse embryonic and adult fibroblast cultures by defined factors. *Cell*. 2006;126:663–676. doi: 10.1016/j.cell.2006.07.024.
70. Domian JJ, Chiravuri M, van der Meer P, Feinberg AW, Shi X, Shao Y, Wu SM, Parker KK, Chien KR. Generation of functional ventricular heart muscle from mouse ventricular progenitor cells. *Science*. 2009;326:426–429. doi: 10.1126/science.1177350.

71. Lian X, Hsiao C, Wilson G, Zhu K, Hazeltine LB, Azarin SM, Raval KK, Zhang J, Kamp TJ, Palecek SP. Robust cardiomyocyte differentiation from human pluripotent stem cells via temporal modulation of canonical Wnt signaling. *Proc Natl Acad Sci U S A*. 2012;109:E1848–E1857. doi: 10.1073/pnas.1200250109.
72. Ueno S, Weidinger G, Osugi T, Kohn AD, Golob JL, Pabon L, Reinecke H, Moon RT, Murry CE. Biphasic role for Wnt/beta-catenin signaling in cardiac specification in zebrafish and embryonic stem cells. *Proc Natl Acad Sci U S A*. 2007;104:9685–9690. doi: 10.1073/pnas.0702859104.
73. Birket MJ, Ribeiro MC, Verkerk AO, Ward D, Leitoguinho AR, den Hartogh SC, Orlova VV, Devalla HD, Schwach V, Bellin M, Passier R, Mummery CL. Expansion and patterning of cardiovascular progenitors derived from human pluripotent stem cells. *Nat Biotechnol*. 2015;33:970–979. doi: 10.1038/nbt.3271.
74. Papadaki M, Bursac N, Langer R, Merok J, Vunjak-Novakovic G, Freed LE. Tissue engineering of functional cardiac muscle: molecular, structural, and electrophysiological studies. *Am J Physiol Heart Circ Physiol*. 2001;280:H168–H178.
75. Lesman A, Habib M, Caspi O, Gepstein A, Arbel G, Levenberg S, Gepstein L. Transplantation of a tissue-engineered human vascularized cardiac muscle. *Tissue Eng Part A*. 2010;16:115–125. doi: 10.1089/ten.TEA.2009.0130.
76. Caspi O, Lesman A, Basevitch Y, Gepstein A, Arbel G, Habib IH, Gepstein L, Levenberg S. Tissue engineering of vascularized cardiac muscle from human embryonic stem cells. *Circ Res*. 2007;100:263–272. doi: 10.1161/01.RES.0000257776.05673.ff.
77. Chong JJ, Yang X, Don CW, et al. Human embryonic-stem-cell-derived cardiomyocytes regenerate non-human primate hearts. *Nature*. 2014;510:273–277. doi: 10.1038/nature13233.
78. Weintraub H, Tapscott SJ, Davis RL, Thayer MJ, Adam MA, Lassar AB, Miller AD. Activation of muscle-specific genes in pigment, nerve, fat, liver, and fibroblast cell lines by forced expression of MyoD. *Proc Natl Acad Sci U S A*. 1989;86:5434–5438.
79. Choi J, Costa ML, Mermelstein CS, Chagas C, Holtzer S, Holtzer H. MyoD converts primary dermal fibroblasts, chondroblasts, smooth muscle, and retinal pigmented epithelial cells into striated mononucleated myoblasts and multinucleated myotubes. *Proc Natl Acad Sci U S A*. 1990;87:7988–7992.
80. Davis RL, Weintraub H, Lassar AB. Expression of a single transfectable cDNA converts fibroblasts to myoblasts. *Cell*. 1987;51:987–1000.
81. Sancho-Martinez I, Baek SH, Izpisua Belmonte JC. Lineage conversion methodologies meet the reprogramming toolbox. *Nat Cell Biol*. 2012;14:892–899. doi: 10.1038/ncb2567.
82. Vierbuchen T, Wernig M. Direct lineage conversions: unnatural but useful? *Nat Biotechnol*. 2011;29:892–907. doi: 10.1038/nbt.1946.
83. He Q, Trindade PT, Stumm M, Li J, Zammaretti P, Bettiol E, Dubois-Dauphin M, Herrmann F, Kalangos A, Morel D, Jaconi ME. Fate of undifferentiated mouse embryonic stem cells within the rat heart: role of myocardial infarction and immune suppression. *J Cell Mol Med*. 2009;13:188–201. doi: 10.1111/j.1582-4934.2008.00323.x.
84. Ieda M, Fu JD, Delgado-Olguin P, Vedantham V, Hayashi Y, Bruneau BG, Srivastava D. Direct reprogramming of fibroblasts into functional cardiomyocytes by defined factors. *Cell*. 2010;142:375–386. doi: 10.1016/j.cell.2010.07.002.
85. Chen JX, Krane M, Deutsch MA, Wang L, Rav-Acha M, Gregoire S, Engels MC, Rajarajan K, Karra R, Abel ED, Wu JC, Milan D, Wu SM. Inefficient reprogramming of fibroblasts into cardiomyocytes using Gata4, Mef2c, and Tbx5. *Circ Res*. 2012;111:50–55. doi: 10.1161/CIRCRESAHA.112.270264.
86. Song K, Nam YJ, Luo X, Qi X, Tan W, Huang GN, Acharya A, Smith CL, Tallquist MD, Neilson EG, Hill JA, Bassel-Duby R, Olson EN. Heart repair by reprogramming non-myocytes with cardiac transcription factors. *Nature*. 2012;485:599–604. doi: 10.1038/nature11139.
87. Protze S, Khattak S, Poulet C, Lindemann D, Tanaka EM, Ravens U. A new approach to transcription factor screening for reprogramming of fibroblasts to cardiomyocyte-like cells. *J Mol Cell Cardiol*. 2012;53:323–332. doi: 10.1016/j.yjmcc.2012.04.010.
88. Jayawardena TM, Egemnazarov B, Finch EA, Zhang L, Payne JA, Pandya K, Zhang Z, Rosenberg P, Mirotsov M, Dzau VJ. MicroRNA-mediated in vitro and in vivo direct reprogramming of cardiac fibroblasts to cardiomyocytes. *Circ Res*. 2012;110:1465–1473. doi: 10.1161/CIRCRESAHA.112.269035.
89. Inagawa K, Miyamoto K, Yamakawa H, Muraoka N, Sadahiro T, Umei T, Wada R, Katsumata Y, Kaneda R, Nakade K, Kurihara C, Obata Y, Miyake K, Fukuda K, Ieda M. Induction of cardiomyocyte-like cells in infant hearts by gene transfer of Gata4, Mef2c, and Tbx5. *Circ Res*. 2012;111:1147–1156. doi: 10.1161/CIRCRESAHA.112.271148.
90. Islas JF, Liu Y, Weng KC, Robertson MJ, Zhang S, Prejusa A, Harger J, Tikhomirova D, Chopra M, Iyer D, Mercola M, Oshima RG, Willerson JT, Potaman VN, Schwartz RJ. Transcription factors ETS2 and MESP1 transdifferentiate human dermal fibroblasts into cardiac progenitors. *Proc Natl Acad Sci U S A*. 2012;109:13016–13021. doi: 10.1073/pnas.1120299109.
91. Nam YJ, Song K, Luo X, Daniel E, Lambeth K, West K, Hill JA, DiMaio JM, Baker LA, Bassel-Duby R, Olson EN. Reprogramming of human fibroblasts toward a cardiac fate. *Proc Natl Acad Sci U S A*. 2013;110:5588–5593. doi: 10.1073/pnas.1301019110.
92. Wada R, Muraoka N, Inagawa K, et al. Induction of human cardiomyocyte-like cells from fibroblasts by defined factors. *Proc Natl Acad Sci U S A*. 2013;110:12667–12672. doi: 10.1073/pnas.1304053110.
93. Fu JD, Stone NR, Liu L, Spencer CI, Qian L, Hayashi Y, Delgado-Olguin P, Ding S, Bruneau BG, Srivastava D. Direct reprogramming of human fibroblasts toward a cardiomyocyte-like state. *Stem Cell Reports*. 2013;1:235–247. doi: 10.1016/j.stemcr.2013.07.005.
94. Sadahiro T, Yamanaka S, Ieda M. Direct cardiac reprogramming: progress and challenges in basic biology and clinical applications. *Circ Res*. 2015;116:1378–1391. doi: 10.1161/CIRCRESAHA.116.305374.
95. Qian L, Huang Y, Spencer CI, Foley A, Vedantham V, Liu L, Conway SJ, Fu JD, Srivastava D. In vivo reprogramming of murine cardiac fibroblasts into induced cardiomyocytes. *Nature*. 2012;485:593–598. doi: 10.1038/nature11044.
96. Kubo H, Shimizu T, Yamato M, Fujimoto T, Okano T. Creation of myocardial tubes using cardiomyocyte sheets and an in vitro cell sheet-wrapping device. *Biomaterials*. 2007;28:3508–3516. doi: 10.1016/j.biomaterials.2007.04.016.
97. Sekine H, Shimizu T, Yang J, Kobayashi E, Okano T. Pulsatile myocardial tubes fabricated with cell sheet engineering. *Circulation*. 2006;114:187–193. doi: 10.1161/CIRCULATIONAHA.105.000273.
98. Stevens KR, Kreutziger KL, Dupras SK, Korte FS, Regnier M, Muskheli V, Nourse MB, Bendixen K, Reinecke H, Murry CE. Physiological function and transplantation of scaffold-free and vascularized human cardiac muscle tissue. *Proc Natl Acad Sci U S A*. 2009;106:16568–16573. doi: 10.1073/pnas.0908381106.
99. Wei K, Serpooshan V, Hurtado C, et al. Epicardial FSTL1 reconstitution regenerates the adult mammalian heart. *Nature*. 2015;525:479–485. doi: 10.1038/nature15372.
100. Li M, Suzuki K, Kim NY, Liu GH, Izpisua Belmonte JC. A cut above the rest: targeted genome editing technologies in human pluripotent stem cells. *J Biol Chem*. 2014;289:4594–4599. doi: 10.1074/jbc.R113.488247.
101. Wu J, Izpisua Belmonte JC. Dynamic pluripotent stem cell states and their applications. *Cell Stem Cell*. 2015;17:509–525. doi: 10.1016/j.stem.2015.10.009.

Circulation Research

JOURNAL OF THE AMERICAN HEART ASSOCIATION



Mending a Faltering Heart Mo Li and Juan Carlos Izpisua Belmonte

Circ Res. 2016;118:344-351

doi: 10.1161/CIRCRESAHA.115.306820

Circulation Research is published by the American Heart Association, 7272 Greenville Avenue, Dallas, TX 75231

Copyright © 2016 American Heart Association, Inc. All rights reserved.

Print ISSN: 0009-7330. Online ISSN: 1524-4571

The online version of this article, along with updated information and services, is located on the
World Wide Web at:

<http://circres.ahajournals.org/content/118/2/344>

Permissions: Requests for permissions to reproduce figures, tables, or portions of articles originally published in *Circulation Research* can be obtained via RightsLink, a service of the Copyright Clearance Center, not the Editorial Office. Once the online version of the published article for which permission is being requested is located, click Request Permissions in the middle column of the Web page under Services. Further information about this process is available in the [Permissions and Rights Question and Answer](#) document.

Reprints: Information about reprints can be found online at:
<http://www.lww.com/reprints>

Subscriptions: Information about subscribing to *Circulation Research* is online at:
<http://circres.ahajournals.org/subscriptions/>